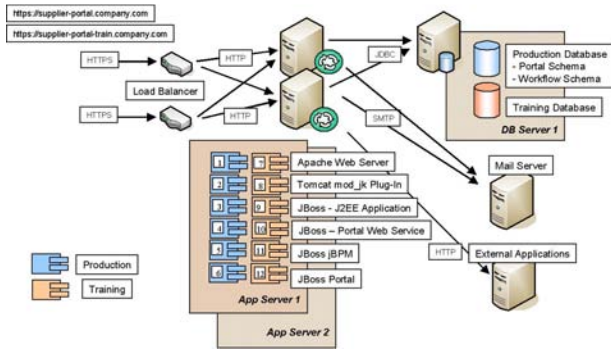
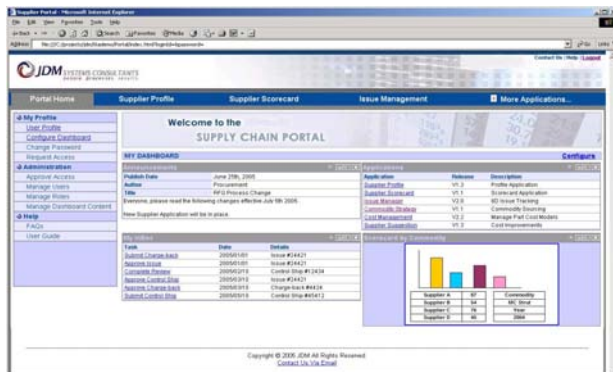


Solution Architecture

The Supplier Portal solution architecture is based on J2EE industry standards. The portal supports standard portlet integration using either the JSR-168 Java specification or the WSRP web service specification. The standard J2EE application server platform is the base for a reliable, robust, scalable solution that requires nearly zero maintenance. These and other technologies have been brought together in a logically layered solution. The following diagram depicts a reference solution architecture including the various interfaces and components.

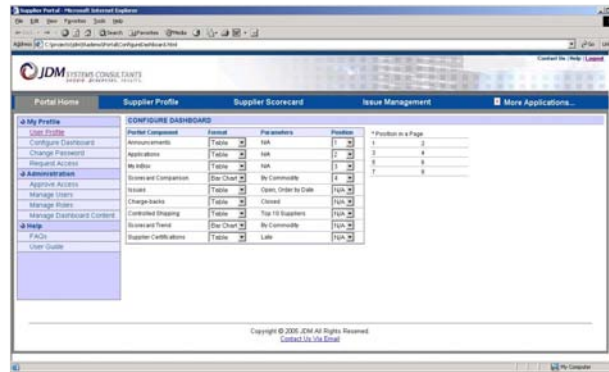


The two key components for the architecture are the administration component and the integration component to external applications. These two components are built in the J2EE application deployed with the portal.



Administration Component

The administration component includes portlets for managing users, roles, applications, and suppliers. The administration functionality includes a number of processes that are implemented as business process management or BPM workflows. This approach creates a flexible solution that can be adapted to organizations specific business requirements with minimal modifications.



Integration Component

The integration component includes a Single Sign On solution and a web service for portal information.

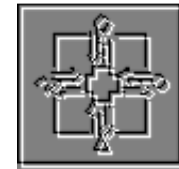
Single Sign On – The portal utilizes SAML as a mechanism to pass authentication credentials to external applications accessed by the portal.

Portal Web Service – The portal web service provides on demand access for portal user and application information to portal applications.

Conclusion

Invest in JDM Systems Consultants by utilizing the Supplier Portal solution for your corporations supply chain management needs. Realize a valuable return on your investment with the rapid and dependable results provided by JDM.

www.jdmconsulting.com



Supplier Portal Supply Chain Management Solutions Suite

Powered by



PRODUCTIVITY SOLUTIONS PRODUCT PLANNING & SOURCING

BUSINESS PROCESS

AUTOMATION

SALES & MARKETING

SUPPLY CHAIN MANAGEMENT

SOLUTIONS SUITE

Overview

A web portal provides many benefits to corporations that work with Suppliers or Vendors on a day-to-day basis. The portal provides functionality for streamlining the communication process with less chance of miscommunication of business critical information. The core of this functionality is based on a consistent approach to accessing IT applications through the portal to enable the business. JDM provides a web portal solution as part of its supply chain custom solution suite of offerings. Based on standard J2EE web technology the solution is flexible and does not require complex and expensive products and integration.

Reality

Portals are relatively common across manufacturing organizations with a large supply base. A number of portals provide access to applications and content, but don't possess the business process management and integration that is really required.

Solution

The Supplier Portal solution is based on a best of breed industry standard J2EE technology. The solution is a web-based application that can be deployed by any corporation for enabling their supplier base with business applications. The portal centers on a modular architecture that is described in the modules section below.

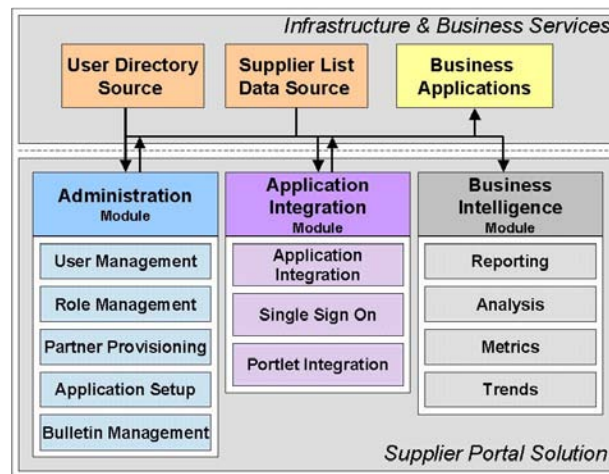
Benefits

The portal solution JDM offers can benefit a corporation and its supply base in many ways including the following:

- **Improving supplier sentiment by including them in organizational business processes.**
- **Improves supplier relationship.**
- **Increases communication timeliness.**
- **Reduces miscommunication of business critical information.**
- **Improved productivity via a functional and user-friendly online portal.**

Solution Modules

The Supplier Portal solution includes an Administration module, an Application Integration module, and a Business Intelligence module. The following diagram outlines the modules and how they interface with external services.



Portal Administration Module

The Administration module includes all the functionality for managing the portal.

User Management – A tool for administrators to manage the portal user base. Delegated administration can reduce the workload for corporate administrators by allowing suppliers to setup site administrators.

Role Management – A for managing users roles in both the portal and for business applications.

Partner Provisioning – Includes workflow processes for provisioning new suppliers on the portal. Integration with corporate supplier lists improves the provisioning process.

Application Setup – A simple and secure approach to managing applications running on the portal is the goal of this component.

Bulletin Management – Includes managing the creation, approval, publication, expiration, and archival of bulletins to all, some, or specific suppliers and users on the portal.

Application Integration Module

The portal is a gateway to securely and consistently accessing business applications. The integration module handles the details for portal users to access the business applications.

Application Integration – The portal is the home site from where business applications will be launched for the portal user. The primary tasks of this integration are to manage launching the applications in a secure manner and seamlessly handle inactivity timeouts and logouts.

Single Sign On – The portal needs to implement a seamless single login to all applications launched by the portal. This requirement can become difficult where a login has to seamlessly traverse multiple domains. This solution includes the technology for handling such complexities.

Portlet Integration – Portlets are key components to portals. The use of portlets is a standard approach to capitalize on reusable business logic.

Business Intelligence Module

This module provides the supply chain management business unit with a tool for answering portal usage questions to improve the decision making process.

Reporting – A standard parameterized reporting module allows for all types of reports on portal usage statistics.

Analysis – An Online Analytical Process OLAP module allows users to slice and dice usage and supporting data using a multi-dimensional methodology.

Metrics – A metrics component allows a corporation to setup measures to track for portal metrics.

Trends - A trending component provides functionality for setting up data to watch for trends. The component includes methods for setting up thresholds that can produce notifications when trends exceed desirable limits.

