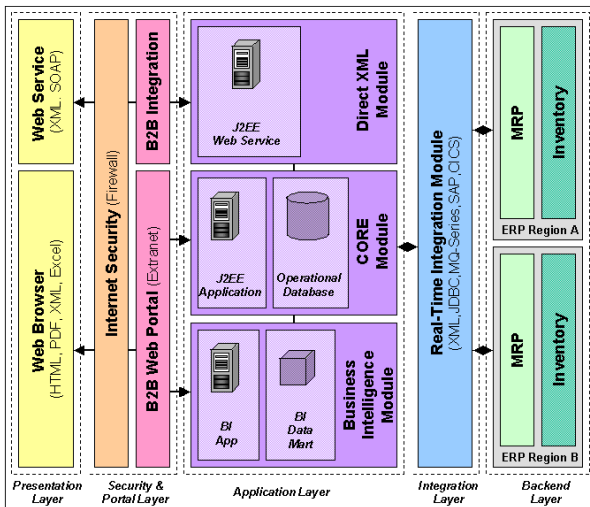


Interface Module

The interface module is a flexible and customizable interface between the WebEDI application and the corporate back end systems including ERP applications. The interface includes real time translation of EDI messages from the corporate systems domain to the WebEDI domain for message storage and forwarding. Additionally, this module includes a one-stop interface to the Direct XML and Business Intelligence modules.

Solution Architecture

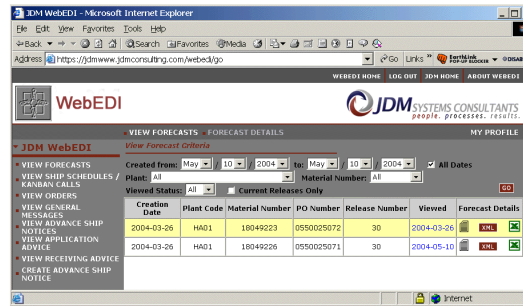
The WebEDI solution architecture is based on J2EE and industry standards. The utilization of XML as a flexible integration language makes the WebEDI solution adaptable to any organizations data. The standard J2EE application server platform is the base for a reliable, robust, scalable solution that requires nearly zero maintenance. These and other technologies have been brought together in a logically layered solution. The following diagram presents these layers and how they interact with each other.



The architecture includes layers for each functional aspect of the solution including a presentation, security & portal, application, integration, and backend layers.

Presentation Layer

The presentation layer is the interface for the corporation and supplier to interact with the application. Each interface is based on industry standards for flexibility and maintainability.



Security & Portal Layer

This layer includes details for implementing the application within a corporations infrastructure..

Application Layer

The application layer includes all the components required to deploy each module of the WebEDI application.

Integration Layer

The integration layer is a real-time or near real-time data channel between the application and corporate systems depending upon the interface technology and architecture.

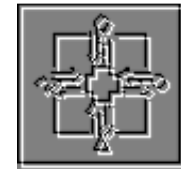
Backend Layer

The backend layer includes any number of applications and processes for enabling EDI.

Conclusion

Invest in JDM Systems Consultants by utilizing the WebEDI solution for your corporations supply chain management needs. Realize a valuable return on your investment with the rapid and dependable results provided by JDM.

www.jdmconsulting.com



WebEDI

Supply Chain Management Solutions Suite

Powered by



PRODUCTIVITY SOLUTIONS | PRODUCT PLANNING & SOURCING

BUSINESS PROCESS

AUTOMATION

SALES & MARKETING

SUPPLY CHAIN MANAGEMENT

SOLUTIONS SUITE

Overview

Manufacturing and other corporations rely on EDI to streamline the process of interacting with the supply chain. Traditional EDI solutions have become antiquated relying on outdated technology, high operational costs, and limited flexibility. JDM provides a custom web based EDI solution called WebEDI as part of its supply chain custom solution suite of offerings. Based on standard J2EE web technology the solution is flexible and does not require expensive VANs, thus reducing operational costs over traditional solutions.

Reality

For years traditional EDI solutions have been based on semi-proprietary standards and utilize required third-party VANs for EDI messaging. The standards include text-encoded files that are somewhat inflexible and have no mappings to industry standard IT software. The VANs required for traditional EDI messaging have become obsolete with the Internet and the invention of industry standard secure messaging protocols.

Solution

The WebEDI solution is based on a best of breed industry standard J2EE technology. The solution is a web based application that can be deployed by any corporation for enabling online EDI transactions with their suppliers without the need of a VAN. The application centers around a modular architecture that is described in the modules section below.

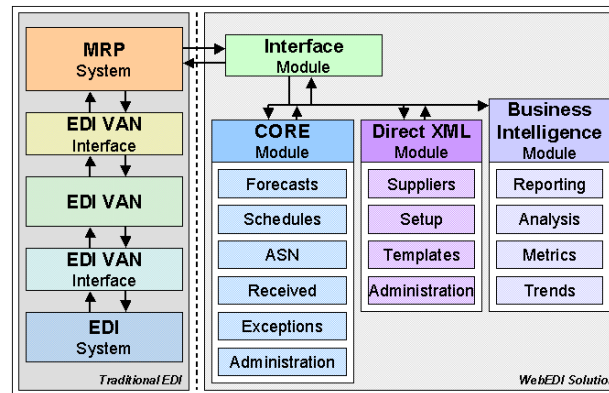
Benefits

The WebEDI solution JDM offers can benefit a corporation and its supply base in many ways including the following:

- **Reduces suppliers EDI costs.**
- **Improves supplier relationship.**
- **Provides a better return on investment (ROI) over traditional EDI.**
- **Improved productivity via a functional and user friendly online application.**

Solution Modules

The WebEDI solution includes a CORE module, a Direct XML module, a Business Intelligence module, and an Interface module. The following diagram outlines the modules and how these modules compare to a traditional EDI solution.



CORE Module

The Core module is the center of the WebEDI application that encompasses all the business logic to conduct EDI transactions. Each transaction includes various screens supporting business processes like searching, filtering, wizards, etc. The following transactions are handled in this module:

Forecasts – A tool for searching and viewing forecast details and relations to ASNs, etc.

Schedules – A tool for searching and viewing schedule agreements and the associated details.

ASN – A tool for creating, viewing, and printing Advanced Shipping Notices for all types of scheduling agreements for the business.

Received - Upon the corporations receipt of parts/material from the supplier, a received message will notify the supplier including any discrepancies or defects within the shipment.

Exceptions - Includes notifications for any exceptions that may occur in messaging connectivity and the data within messages.

Administration - Consists of supporting screens for an administrator to manage users representing specific suppliers, run various reports, and more.

Direct XML Module

The direct XML module enables direct messaging between a corporation and their suppliers IT systems. The module includes various methods for streamlining the direct XML messaging process with a large amount of flexibility.

Suppliers – In order to conduct direct XML messaging with a supplier, a supplier profile must be created. The profile includes various attributes for a supplier including contact information, messaging configuration including security mechanisms.

Setup – A tool for streamlining the setup process.

Templates – The application provides functionality for managing templates utilized for messaging between the corporation and it's suppliers.

Administration – The administration functionality includes monitoring capability, the ability to pause messaging with specific suppliers, and execute various reports.

Business Intelligence Module

This module provides the supply chain management business unit with a tool for answering EDI questions to improve the decision making process.

Reporting – A standard parameterized reporting module allows for all types of reports by core module transactions, direct XML transactions, usage statistics, and other data.

Analysis – An Online Analytical Process OLAP module allows users to slice and dice transactional and supporting data using a multi-dimensional methodology.

Metrics – A metrics component allows a corporation to setup measures to track for quality and delivery metrics.

Trends - A trending component provides functionality for setting up data to watch for trends. The component includes methods for setting up thresholds that can produce notifications when trends exceed desirable limits.

PRODUCTIVITY
SOLUTIONS

PRODUCT PLANNING
& SOURCING

BUSINESS PROCESS

AUTOMATION

SALES &
MARKETING

SUPPLY CHAIN
MANAGEMENT

SOLUTIONS SUITE